





A beautifully presented 3 BEDROOM DETACHED property with large fitted kitchen/dining room, conservatory and DETACHED GARAGE.

An internal viewing will reveal an entrance vestibule with open-plan living room seamlessly connecting to a fitted kitchen and dining area, creating a warm and welcoming space for family gatherings.

This home boasts three bedrooms, each equipped with built-in storage, ensuring ample space for your belongings. The family bathroom/WC is fitted with a contemporary white suite, providing a stylish and functional area for your daily routines.

One of the standout features of this property is the low-maintenance enclosed private rear garden, perfect for enjoying the outdoors without the hassle of extensive upkeep. Additionally, the extensive driveway offers parking for a number of vehicles, complemented by a detached garage for further convenience.







- Detached
- uPVC double glazed conservatory
- Low maintenance enclosed private rear garden
- Detached garage
- Popular Woodham location

- Large open plan fitted kitchen/dining room
- Built-in storage to each bedroom
- Driveway extending to the side of the property
- Beautifully presented and maintained throughout
- Viewing highly recommended

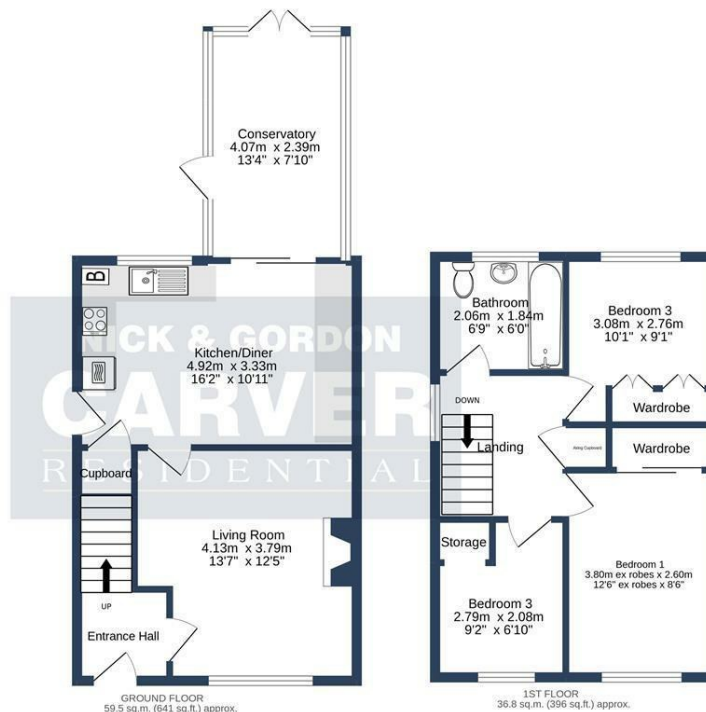
#### Agents Notes

Tenure:- Freehold

Mains gas, (central heating to radiators), electricity & drainage

uPVC double glazing throughout





PEMBERTON ROAD, NEWTON AYCLIFFE, DL5 4RY.

TOTAL FLOOR AREA : 96.3 sq.m. (1037 sq.ft.) approx.

Whilst every attempt has been made to ensure the accuracy of the floorplan contained here, measurements of doors, windows, rooms and any other items are approximate and no responsibility is taken for any error, omission or mis-statement. This plan is for illustrative purposes only and should be used as such by any prospective purchaser. The services, systems and appliances shown have not been tested and no guarantee as to their operability or efficiency can be given.  
Made with Metropix ©2022

Energy Efficiency Rating		
	Current	Potential
Very energy efficient - lower running costs		
(92 plus) <b>A</b>		<b>81</b>
(81-91) <b>B</b>		
(69-80) <b>C</b>		
(55-68) <b>D</b>		
(39-54) <b>E</b>		
(21-38) <b>F</b>	<b>63</b>	<b>81</b>
(1-20) <b>G</b>		
Not energy efficient - higher running costs		
England & Wales		EU Directive 2002/91/EC

**We can search 1,000s of mortgages for you**

It could take just 15 minutes with one of our specialist advisers:  
Call: 01325 380088. Visit: Any of our Offices. Online: [www.mortgageadvicebureau.com/carver](http://www.mortgageadvicebureau.com/carver)



Your home may be repossessed if you do not keep up repayments on your mortgage.  
There will be a fee for mortgage advice. The actual amount you pay will depend upon your circumstances.  
The fee is up to 1% but a typical fee is 0.3% of the amount borrowed

MAB 6202



These particulars do not constitute any part of an offer or contract. None of the statements contained in these particulars are to be relied on as statements or representations of fact and any intending purchaser must satisfy himself by inspection or otherwise to the correctness of each of the statements contained in these particulars. The vendor does not make or give, and neither Nick & Gordon Carver Residential or Commercial, Nick & Gordon Carver, nor any person in their employment has any authority to make or give any representation or warranty whatever in relation to this property



**14 Duke Street, Darlington**  
**Co Durham, DL3 7AA**  
**01325 357807**  
**[sales@carvergroup.co.uk](mailto:sales@carvergroup.co.uk)**

**63 Dalton Way, Newton Aycliffe**  
**Co Durham DL5 4NB**  
**01325 320676**  
**[aycliffe@carvergroup.co.uk](mailto:aycliffe@carvergroup.co.uk)**

**41 Market Place, Richmond**  
**North Yorkshire, DL10 4QL**  
**01748 825317**  
**[richmond@carvergroup.co.uk](mailto:richmond@carvergroup.co.uk)**

**219 High Street, Northallerton**  
**North Yorkshire DL7 8LW**  
**01609 777710**  
**[northallerton@carvergroup.co.uk](mailto:northallerton@carvergroup.co.uk)**

**[www.carvergroup.co.uk](http://www.carvergroup.co.uk)**